

Sri Lanka – individual trip

Experience nature & culture sustainably

14 days
Private trip on the desired date
min. 2 participants

Would you like to experience the beauties of Sri Lanka as a couple or group of friends and stay in stylish 4*-5* hotels with comprehensive sustainability programs? This trip includes a varied program with diverse cultural and natural experiences. You'll climb the famous Lion Rock in Sigiriya, marvel at the art in the cave temples of Dambulla and visit the Temple of the Sacred Tooth in Kandy. You listen to the mahout of an elephant protection project, the power women of a fair-trade cooperative and the pickers of a sustainably managed tea plantation. Lunches in small villages foster interactions with the inhabitants, and encounters with conservation experts offer a unique nocturnal nature experience. There is also variety in the accommodation: each hotel has its own ambience, all of which have in common the philosophy of extensive sustainability and incomparable Sri Lankan hospitality.



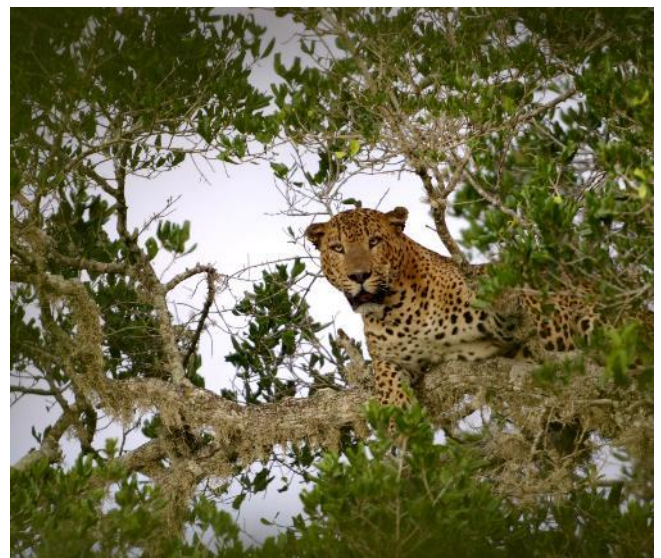
Travel individually



Experience culture



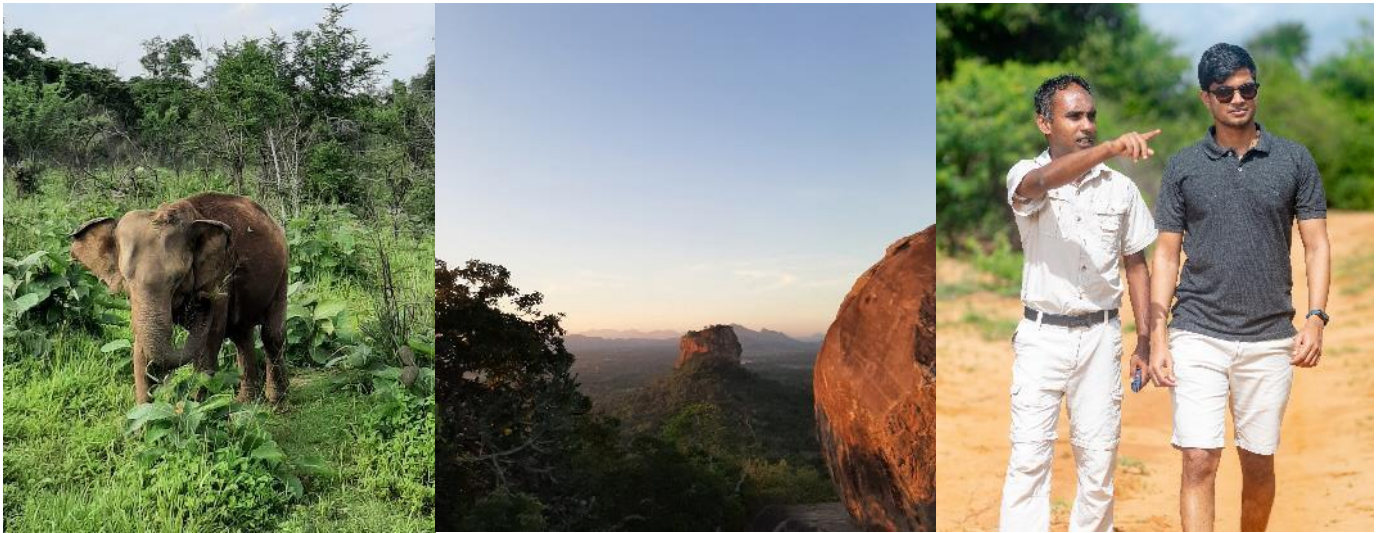
Enjoy nature



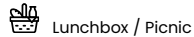
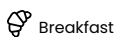


Authentic and sustainable

- Overnight stays in sustainable ****/***** hotels from a Sri Lankan hotel group
- Dinner not included – allows you to get to know the local cuisine individually
- Visit to a Fairtrade cooperative
- Visits to local producers (spices/medicinal plants, tea, cinnamon)
- Lunch and opportunities to chat with local families
- Meaningful interactions with the locals.



Travel itinerary



Day 1
Flight to Sri Lanka

Flight with Turkish Airlines from Luxembourg (other airports on request) via Istanbul towards Sri Lanka: 11.35 a.m. - 4.55 p.m. (flight time approx. 3.5 hours), onward flight at 7.25 p.m. (flight time to Colombo approx. 8.25 hours).

Day 2
Arrival in Sri Lanka

After arriving early in the morning, you will be greeted in the arrivals hall with the Sri Lankan greeting "Ayubowan!" ("May you live long!"). Transfer (approx. 20 kilometers/approx. 45 minutes travel time) to the nearby hotel and check-in. The pleasant accommodation is picturesquely located between the beautiful Negombo Lagoon on one side and the vast Indian Ocean on the other. A perfect place to relax and acclimatize after a long-haul flight.



Overnight stay at the Hotel Jetwing Lagoon***** in Negombo.

Day 3
Walking with elephants, traditional life in the 18th and 19th centuries century



Not riding, but walking – an impressive experience! At the Millennium Elephant Foundation, you will learn exciting things about Asian elephants and the foundation's activities. Animal protection in Sri Lanka is still in its infancy and there is no public funding for it. Visiting the organization helps keep it alive. Together with the mahout and his elephant you will hike through the jungle (approx. 30 minutes) and you can ask the mahout any questions that are on your mind. During the subsequent bath in the river, scrub the animal with a halved coconut shell, a good massage for the pachyderm. After lunch in the foundation's own restaurant, visit the "Pinnawala Traditional Village Theme Park", the open-air museum reflects rural life in the 18th and early 19th centuries in Sri Lanka. In the house of an Ayurveda doctor, you will gain insights into traditional medicine in Sri Lanka, in the house of the village head you will learn about the balance of power at that time between the people, community representatives and the king. An herbal drink and traditionally made sweets are served to refresh you, and friendly villagers show you some of the everyday equipment. In the afternoon you will continue your journey and check into a hotel that is one of the icons of sustainability in Sri Lanka. (Today a total of approx. 185 kilometers, approx. five hours driving time.)



Overnight stay at Hotel Vil Uyana***** in Sigiriya.

Travel itinerary

Day 4

Day trip: Fauna and flora in Ritigala, Minneriya and on the Loris Night Trail



The "Ritigala Strict Nature Reserve" is considered a biodiversity hotspot in Sri Lanka. When hiking on the ancient stone paths (not steep, more than 400 steps, shady, approx. 2-3 hours in total) to the summit of the 766-meter-high mountain, you will encounter three different climate zones and countless species of birds. Continue to Habarana. In the afternoon, to coincide with the sunset, you climb (via countless steps) the approximately 200-meter-high Lion Rock of Sigiriya, which rises spectacularly from the green plain and can be seen from afar. A magnificent view and the ruins of a magnificent palace await you on the summit plateau. The once opulent residence of King Kassapa with a tropical garden, an infinity swimming pool, airy pavilions and the world-famous "Cloud Girls" is now a UNESCO World Heritage Site. Your hotel, Vil Uyana, includes a man-made wetland with lakes, reedbeds and a forest that is now a haven for wildlife. Experience the magic of the tropical forest at night and look out for endangered species such as the Gray Lorikeet, one of the rarest and smallest primates in the world. In the light of the moon, you can observe the animals with their overwhelmingly large eyes and tiny limbs in their natural habitat. (Total distance approx. 100 kilometers / approx. three hours driving time).



Overnight stay at Hotel Vil Uyana*****.

Day 5

Sigiriya-Kandy. Cave Temple in Dambulla, Textile Cooperative, the Temple of the Sacred Tooth and feasting at the market



A varied day: Approximately 300 steps lead up to the beautiful Buddhist cave temples of Dambulla (UNESCO World Heritage Site). The five caves, decorated with magnificent statues and the finest paintings, once served as a hiding place for King Vattagamani Abhaya. As a thank you, he founded the first hermitage, other kings followed suit, and this is how these magical grottos with their very special atmosphere were created. On the journey to Kandy, you will visit a textile cooperative. Founded in 1991, it is now the only Fair-Trade certified handicraft company in Sri Lanka and at the same time one of the largest social enterprises in the country. Around 1,000 artisans in the network produce high-quality weavings in their villages (with flexible working hours), improving the standard of living in rural areas while keeping the local traditions of hand weaving and crafts in Sri Lanka alive. Lunch in a local restaurant. Once you arrive in Kandy, check in to your hotel, idyllically located on the Mahaweli River. Later visit the famous Temple of the Sacred Tooth. The golden monstrance is shown three times a day, then people stream into the temple while drumming and offer their offerings (especially lotus flowers and food), an impressive ritual. At a local food market supported by the Ministry of Agriculture, you can immerse yourself in the culinary diversity of the region, try local specialties to your heart's content and look into the intricacies of local cuisine during show cooking. In the cultural center you can watch the cultural dances, the various performances combine the traditional dances of the island. (Total distance approx. 160 kilometers/approx. 4-5 hours driving time)



Overnight stay at the Hotel Jetwing Gallery****(*) in the village of Gurudeniya near Kandy.

Travel itinerary

Day 6

Day Trip: Hike in the Knuckle's Mountains



Early in the morning you set off for the Knuckle's Mountains. You will enjoy today's breakfast in nature, in the form of a picnic before the start of your hike. The Dothugala path is relatively easy to walk (depending on your fitness level and consultation with the tour guide, you can also choose one of the four other hiking trails) and leads past green tea plantations into the dense mountain forest of the Knuckle's. Babbling streams, lively birds and the lush greenery of the forest have a soothing effect on the soul. The flora and fauna of the region is very diverse and is home to countless species of birds, amphibians, butterflies, molluscs, mammals and reptiles. From the top of the mountain, you can enjoy a beautiful view. After you've had your fill, go down and the nature trail ends at a small lake. Return to the hotel. (Distance approx. 40 kilometers / approx. 1.5 hours each way.)



Overnight stay at the Hotel Jetwing Gallery****(*).

Day 7

Day trip: country life and walk to the "little end of the world"



Today's excursion takes you to the countryside. The approximately 400 residents of the remote village of Meemure work predominantly in agriculture. Natural streams, birdsong and rice fields define the backdrop. You watch the farmers grow rice traditionally and gain insights into daily life in the country over a tasty lunch with a family. Thanks to your tour guide, exchanges with the local population are possible. After eating, hike to "Little World's End" (about an hour, uneven, about 100 steps). At the summit there is a fantastic panorama of the mountains and gorges up to 600m deep. Return to hotel and free time. (Total distance approx. 130 kilometers/approx. four hours driving time),



Overnight stay at the Hotel Jetwing Gallery****(*).

Day 8

Kandy – Nuwara Eliya: train ride to the highlands, night excursion with a conservationist



Transfer (approx. 15 kilometers/approx. 30 minutes travel time) to the train station in Kandy. The train journey into the highlands is a special experience. Watch the people, you can easily get into conversation with the friendly Sri Lankans, and watch the landscape go by. The changing panoramas of the steep hilly landscapes are impressive; sometimes shrouded in clouds of mist, they appear almost mystical. After arriving in Nuwara Eliya you will be transferred to the hotel (approx. ten minutes drive). Responsible tourism here too: Jetwing St. Andrew's is involved in a variety of sustainable initiatives. At night you can take an unusual tour and get to know the local frogs in their habitat. Together with one of the hotel's conservationists you will roam through the adjacent wetland, Mr. Ishanda Senevirathna takes great pleasure in sharing his passion for the nature of the mountains and his wealth of knowledge about the croaking amphibians with travelers.



Overnight stay at the Hotel Jetwing St. Andrews**** in Nuwara Eliya.

Day 9

Tea plantations in the highlands: a visit to Meena Amma



Today at Warwick Gardens you will learn about the life of tea pickers and the incomparable Meena Amma. The long-time caretaker of the property was once a tea picker herself, grew up and worked in regional estates until she joined the Jetwing family as a gardener. Today Meena Amma takes care of you with the charm of rural hospitality by organizing a series of local experiences around the life of tea and its pickers. Join Meena Amma on her walks through the lush plantations, talk to the many pickers who have built their lives around tea, and get first-hand insight into the painstaking work that goes into your cup of tea. Watch the tea buds being planted and learn to distinguish the different flavors of teas that grow at different altitudes on the green hills of Warwick Gardens. (approx. 20 kilometers/approx. 50 minutes travel time each way)



Overnight stay at the Hotel Jetwing St. Andrews****.

Travel itinerary

Day 10

Warwick Gardens – Yala National Park:
On the hunt



Your journey takes you to the southeast of the island, to the Yala National Park (approx. 170 kilometers/approx. five hours drive). Once there, check in and enjoy the ambience of the hotel, which is embedded in the beauty of the landscape between the Indian Ocean and the national park. In the evening you go on a game drive in a safari jeep (together with other travelers, approx. 2-3 hours) accompanied by an experienced ranger. With the local and competent nature park staff, there is a good chance of encountering wild leopards, majestic elephants and enchanting flocks of birds in the bushland.



Overnight stay at Hotel Jetwing Yala*****.

Day 11

Safari in Yala National Park, kayak on the Yoda Wewa, onward journey to Galle



You start early for another safari (approx. 2-3 hours, together with other travelers in a jeep) in Yala National Park and return to the hotel for breakfast. Later you take a kayak trip (alternatively a relaxing catamaran ride) on the Yoda Wewa and hike along sandy paths along the lakeside villages. Look forward to lunch: the table on the terrace of a village house is already set for you. After lunch, continue along the south coast to Galle. (approx. 170 kilometers/approx. 3-4 hours driving time.)



Overnight stay at the Hotel Jetwing Light House***** in Galle.

Day 12

Galle: The fortress and the history, mask art



The Galle Fortress (UNESCO World Heritage Site) is a fascinating mix of Dutch, Portuguese and British history. You can explore the extensive castle complex on foot or by vehicle. During the subsequent visit to Ambalangoda (approx. 30 kilometers/45 minutes each way), the Sri Lankan center of mask carving, you will admire the traditional art of mask making.



Overnight stay at the Hotel Jetwing Lighthouse*****.

Day 13

Galle – Negombo: Cinnamon & Kithul Toddy



The island is the world's largest producer of real cinnamon. In a cinnamon garden, you will learn from a planter how the popular spice is grown, harvested and peeled and enjoy a cup of fragrant cinnamon tea. In addition to local vegetables, fruits and flowers that are used, for example, to make natural shampoo and toothbrushes, you will get to know Kithul-Toddy. This sweet delicacy is made from a sap that collects in the tops of trees - on the plantation you can taste this rare treat along with local snacks. Continue to Negombo (approx. 170 kilometers/approx. three hours travel time).



Overnight stay at Hotel Jetwing Sea***** in Negombo.

Day 14

End of the trip



Transfer (15 kilometers) to Colombo airport. Flights with Turkish Airlines to Istanbul (07:40 a.m. - 2:15 p.m., flight duration approximately nine hours) and on to Luxembourg (3:30 p.m. - 5:00 p.m., flight duration approximately 3.5 hours).

Program and flight times subject to change. The travel times stated are the actual travel time (excluding breaks and photo stops).



Included services:

- 12 nights in the hotels mentioned in the travel itinerary (or comparable), in a standard double room including breakfast
- Airport fees and kerosene €449 (as of 10/2023)
- CO2 compensation for flights and land-based services via Atmosfair
- Early check-in on the day of arrival
- 1 lunch at the "Millenium Elephant Foundation", 2x lunch with a local family/village house, 1x lunch in a local restaurant
- Transfers, trips and sightseeing according to the program.
- Local driver tour guide (from/to Colombo airport)
- English Speaking Driver Guide (from/to airport Colombo)

Not included are: Visa/ETA, Turkish Airlines seat reservations, tips, meals not mentioned in the itinerary, drinks, insurance, additional activities and excursions, personal expenses.

Prices (per person) (01.11.2023–30.04.2024* per person)

Double room	4.585 €
Single room	6.260 €
Visa/ETA (as of 06/2023)	65 €

Minimum number of participants: 2 guests

Additional fees for flights, e.g. with Turkish Airlines from/to Luxembourg

**Prices not valid in the period December 20, 2023–January 10, 2024*

Important information

Entry: For Luxembourg nationals with a passport valid for at least six months beyond the date of entry, in good condition and with at least one blank page, and a valid visa (ETA). There are currently no restrictions due to the COVID-19 pandemic. However, this can change at any time at short notice. (As of 06/2023).

Almost all accommodations offer free WiFi, although network coverage is not always perfect. Please note that the hotels and lodges only offer non-smoking rooms.

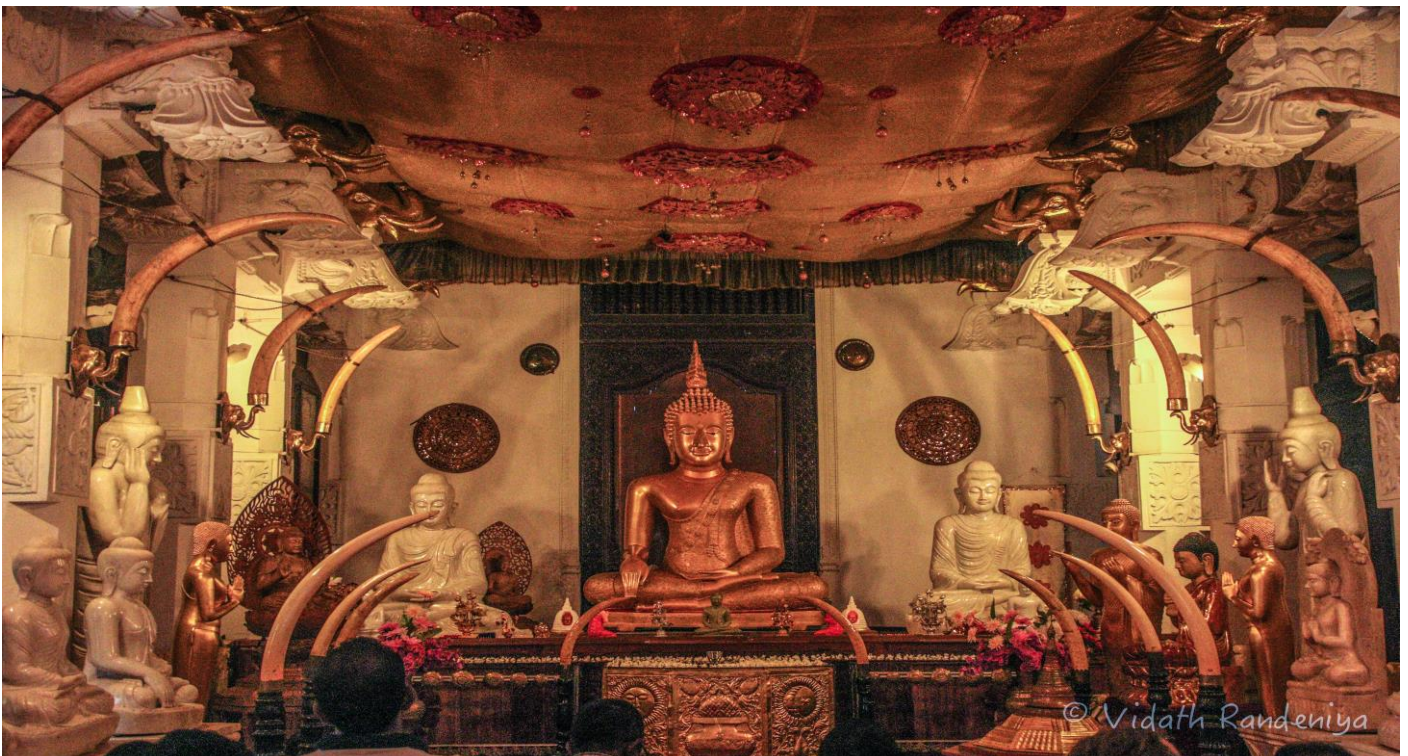
For air travel, our sales prices are generally based on special and tour operator tariffs of the airline(s) selected for the relevant trip. Therefore space is limited and additional charges are possible. After your booking request, we will inform you in the event of an additional charge before sending the travel confirmation with the new price.

With the travel documents you will receive further information about the trip and the destination country.

No insurance is included in the travel price. We strongly recommend taking out travel cancellation insurance that includes Covid-19 as well as appropriate travel health insurance that includes treatment (including quarantine) for Covid-19.

This trip is not suitable for guests with mobility issues. If necessary, please tell us the type of mobility restriction you have before booking and clarify with us whether we can meet your individual needs.

Planet B is a sustainable travel brand of Bollig Tours s. à r.l. . Bollig Tours is therefore named as the organizer in our general travel conditions.



The accommodations

The **Jetwing Lagoon******* hotel in Negombo is the perfect oasis for arrival day. The approx. 63m² rooms with a view of the garden, pool or lagoon are furnished with rustic brown furniture and are sustainably lit by solar energy during the day. Several restaurants and bars cater for culinary well-being. As one of the first hotels in Sri Lanka, Jetwing Lagoon was equipped with 100 % energy-saving LED lighting. Fruits and herbs are grown in the hotel's own organic garden, and its own sewage treatment plant purifies 100% of the waste water produced. The treated water is used to irrigate the garden and to operate the cooling towers.



Uniquely nestled in its surroundings is the iconic **Jetwing Vil Uyana******* hotel in Sigiriya. Each guesthouse was built using 70% natural materials such as wood, bamboo and thatch sourced locally. An innovative plaster mix of clay and cement was also used to eliminate the need for paint, which not only results in lower maintenance costs but also prevents the emission of volatile organic compounds (VOCs). On 28 hectares of fertile farmland, rice, vegetables, fruits and herbs are grown according to centuries-old traditions with the participation of the local population. From the terrace of their approx. 103 m² house you look directly into nature.

The elegant **Hotel Jetwing Kandy Gallery****(*)** is quietly located away from the hustle and bustle of the city centre on the Mahaweli River, the longest river in the country. This accommodation also attaches great importance to sustainability; among other things, 50% of the electrical energy is generated by solar panels. Herbs and vegetables are grown in the hotel's own organic garden, which is irrigated by a water treatment system. On the balcony of your approx. 60m² room you will find, among other things, a comfortable sun lounger with a river view - especially romantic at sunset time.



The accommodations



The **Jetwing St. Andrews****** hotel in Nuwara Eliya is very British and at the same time offers the warm hospitality of Sri Lanka. The approx. 30m² rooms with antique furniture, modern amenities and individually regulated heating also ensure well-being. Fresh vegetables and herbs are grown in the hotel's own garden and organic farm, and beehives provide fresh honey as a natural sweetener for your meals. The hotel's wetland area is unique to the Sri Lankan highlands, and nightly excursions with the resident naturalist introduce you to some of the endemic and highly endangered amphibians. The reserve also provides local school children with a deeper understanding of biodiversity conservation on special excursions.

The **Jetwing Yala******* hotel is beautifully situated between the tranquillity of the Indian Ocean and the Yala National Park in an approx. 38 hectare unexplored coastal wilderness in the south-east of Sri Lanka. From the modernly furnished, approx. 65m² rooms with balcony or terrace, it is not far to the swimming pools and the Indian Ocean. "Signature Dining" allows for romantic dinners in the dunes and rustic barbecues on the beach. 81% of the hotel's required energy comes from renewable energy sources. Jetwing Yala***** has its own glass bottling plant and organic garden, and fresh milk is purchased from local farmers for curd preparation. There are turtle conservation projects and the animals of the nearby national park are also allowed to roam on the hotel's territory.



The accommodations

Designed by Sri Lankan star architect Geoffrey Bawa, the **Jetwing Lighthouse***** hotel** is located on a hill near the city of Galle. The approx. 60m² rooms with balcony/terrace (sea view) are stylishly furnished with lots of wood. There is a whale information centre in the hotel which is appreciated by hotel guests, school children and the general public. Together with local boat and tour operators, blue whale population education programmes and responsible whale watching tours led by local naturalists are offered.



The **Jetwing Sea***** hotel** in Negombo is located on one of Sri Lanka's most beautiful beaches with direct access to the sea. It is the only hotel in Negombo with a rooftop spa, ideal for a wellness afternoon at the end of the trip. The elegant, approx. 34m² rooms are bright and furnished with lots of wood; the balcony overlooks the Indian Ocean. Several restaurants, bars and cafés cater for the physical well-being, "Signature Dining" allows for an exclusive farewell dinner on the beach. The hotel's own organic garden provides fruits and herbs, and the drinking water in glass bottles is sourced from the bottling plant of the nearby Jetwing Blue. As part of its collective sustainable commitment, the Jetwing Sea***** hotel, together with its neighbouring hotels, maintains a health clinic at the Negombo Teaching Hospital for local patients from the surrounding communities.

Jetwing Hotels recognise and respect the principles of the Universal Declaration of Human Rights and the International Labour Organisation Declaration on Fundamental Principles and Rights at Work. Zero Tolerance Policy": against child abuse in Sri Lanka: As an initiative for responsible tourism, the Jetwing hotel chain wants to highlight child abuse in Sri Lanka and create awareness that a zero-tolerance policy is followed in this regard.